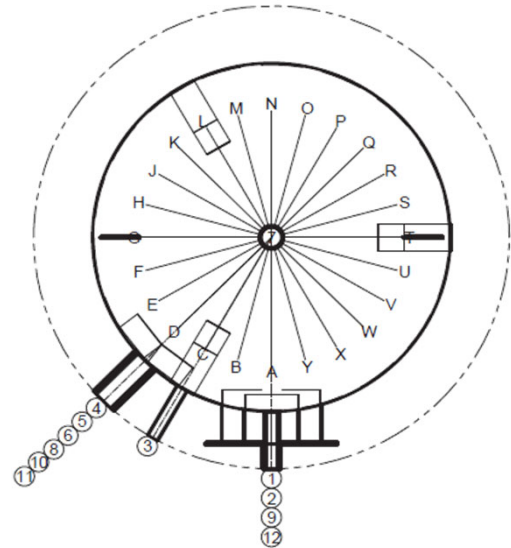
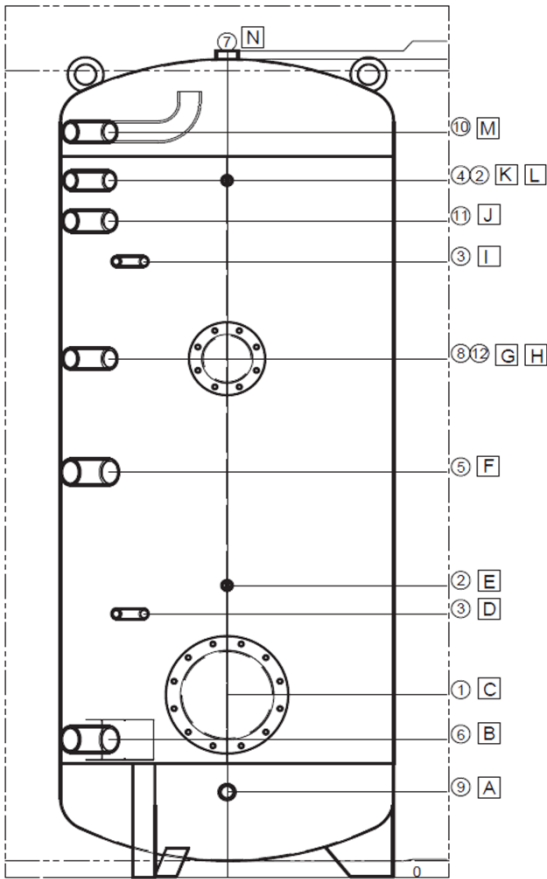


Wassererwärmer

WPE0 500-2000



Höhe in mm ab Unterkante Stellfüsse

| Typ | 500 | 750 | 1000 | 1250 | 1500 | 2000 | | | | | | |
|------------------------------------|-------------|-----------|-----------|-----------|-----------|-----------|------|---------|------|---------|------|---------|
| Inhalt (Liter) | 490 | 739 | 870 | 1211 | 1465 | 1880 | | | | | | |
| Durchmesser ohne Isolierung (mm) | 650 | 790 | 790 | 900 | 1000 | 1100 | | | | | | |
| Durchmesser mit Isolierung (mm) | 800 | 1050 | 1050 | 1160 | 1320 | 1420 | | | | | | |
| Höhe ohne Isolierung (mm) | 1695 | 1755 | 2020 | 2140 | 2185 | 2350 | | | | | | |
| Höhe mit Isolierung (mm) | 1795 | 1885 | 2150 | 2270 | 2315 | 2500 | | | | | | |
| Kippmass (mm) | 1965 | 1898 | 2052 | 2155 | 2222 | 2394 | | | | | | |
| Gewicht (kg) | 145 | 197 | 215 | 235 | 285 | 430 | | | | | | |
| Warmhalteverlust (EU) W/h | 81.6 | 126.4 | 134.9 | 144.4 | 140.4 | 181 | | | | | | |
| Wärmeverlust (CH) kWh/24h | 2.0 | 3.0 | 3.2 | 3.5 | 3.5 | 4.3 | | | | | | |
| Energieeffizienzklasse | B | C | C | C | C | C | | | | | | |
| Isolierung | PU 75mm fix | EPS 130mm | EPS 130mm | EPS 130mm | EPS 160mm | EPS 160mm | | | | | | |
| Betriebs- / Prüfdruck Wasser (bar) | 6/12 | 6/12 | 6/12 | 6/12 | 6/12 | 6/12 | | | | | | |
| max. Betriebstemperatur (°C) | 95 | 95 | 95 | 95 | 95 | 95 | | | | | | |
| SVGW Zertifikat | 0604-5073 | | | | | | | | | | | |
| A) Muffe Entleerung | 200 | 1" | 210 | 1" | 210 | 1" | 290 | 1 1/2" | 315 | 1 1/4" | - | |
| B) Muffe mit Schicht-U BKW / RL | 310 | 2" | 330 | 2" | 340 | 2" | 180 | 1 1/2" | 490 | 2" | 340 | 2" |
| C) Flansch unten | 440 | 220/290 | 450 | 220/290 | 450 | 220/290 | 480 | 170/240 | 655 | 220/290 | 580 | 220/290 |
| D) Fühlermuffe | 650 | 1/2" | 650 | 1/2" | 650 | 1/2" | 480 | 1/2" | 805 | 1/2" | 650 | 1/2" |
| E) Thermometermuffe | 720 | 1/2" | 720 | 1/2" | 720 | 1/2" | 1150 | 1/2" | 905 | 1/2" | 1400 | 1/2" |
| F) Muffe Ladung VL | 780 | 2" | 830 | 2" | 1000 | 2" | 1250 | 1 1/2" | 1385 | 2" | 1050 | 2" |
| G) Muffe Zirkulation | 1050 | 1 1/2" | 1100 | 1 1/2" | 1280 | 1 1/2" | 1510 | 1" | 905 | 1 1/4" | 1520 | 1 1/2" |
| H) Flansch oben | 1150 | 120/180 | 1170 | 120/180 | 1280 | 120/180 | 1380 | 120/180 | 1485 | 120/180 | 1320 | 120/180 |
| I) Fühlermuffe | 1250 | 1/2" | 1230 | 1/2" | 1520 | 1/2" | 1380 | 1/2" | 1565 | 1/2" | 1790 | 1/2" |
| J) Muffe Ladung oben | 1310 | 1 1/2" | 1330 | 1 1/2" | 1620 | 1 1/2" | 1760 | 1 1/2" | 1665 | 2" | 1890 | 2" |
| K) Anodenmuffe | 1410 | 1 1/4" | 1435 | 1 1/4" | 1720 | 1 1/4" | 1710 | 1 1/4" | 1765 | 1 1/4" | 780 | 1 1/4" |
| L) Thermometermuffe | 1410 | 1/2" | 1435 | 1/2" | 1720 | 1/2" | 1860 | 1/2" | 1765 | 1/2" | 1990 | 1/2" |
| M) Muffe BWB mit Bogenrohr | - | - | - | - | 1830 | 1 1/2" | 1860 | 1 1/2" | 1935 | 1 1/2" | 1990 | 2" |
| N) Muffe BWB | 1695 | 1 1/4" | 1755 | 1 1/2" | 2020 | 1 1/2" | 2140 | 1 1/2" | 2185 | 1 1/2" | 2350 | 2" |